



SM 'art[®]
Surface Materials

Catalogue

Designed and made in Italy

Company

We are a dynamic and constantly evolving company that has made innovation its mission, adopting a new creative and productive approach.

We design and produce laminates, melamine and decorative panels.

We aim to create astounding design materials with a strong **Made in Italy** connotation, not only as a concept, but indeed as the majority of the raw materials we use come from Italy.

By investing in **equipment and valuable raw materials**, we are able to conceive and craft unique decors and finishes in order to create products that convey emotions, materials with a soul.

Through collaboration with **internationally renowned designers**, the artists of today, we want to create a hotbed of ideas that allows us to pursue the dream of a high-end bottega.



Why orange?

Orange was SM'art's distinctive trait from the start, its signature, its colour.

We chose it because it reflects our feelings: it is the **emblem of creativity and optimism**. It is the sum of two primary colours and brings with it the explosive power of red, mitigated by the energetic cheerfulness of yellow: it's a colour for all seasons and it comes in countless shades.

Orange has always been associated with well-being, with conviviality and, in general, with a feeling of contentment, and at SM'art we want to make sure that the intention with which we create and manufacture all our products translates into the pleasure of using them, in order to stimulate and satisfy both the sight and the touch. That's why we sign everything with the color, that better than any other, reflects this philosophy: the fiery orange of the dawn of a new day, bearer of stimuli and novelties.



Green mission

At SM'art we have undertaken a path to improve the impact of our production: respect for the environment, attention to sustainability and use of clean and renewable energies, our green mission follows all these paths.

We're proud to do our part and we're committed in the energy transition, to contribute to the increase in the percentage of final consumption of energy coming from renewable sources, in particular through photovoltaics.

That's why we have equipped ourselves with a "green roof", built in 2018 for our factory: a **photovoltaic panel system for a production of approximately 400 kWh**.

In the name of renewable energy and sensitivity to the environment, we have invested in eco-sustainable means for the internal handling of materials. Thanks to our **electric forklifts** that work with lithium-ion batteries, we reduce energy consumption.

The factory lightening has been converted, investing in a **total LED installation** which allows a drastic reduction of the energy consumption.



Thanks to our well, **the water used in the company comes directly from subsoil**, enabling us not to waste precious resources of potable water.

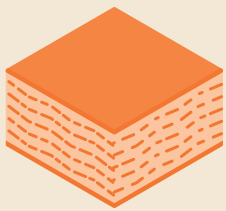
We also pay a great attention to the use of raw materials in the products we use and transform; all products from forest origin belong to a **certified Chain of Custody** that guarantees responsible collection in the name of safeguarding biodiversity, carbon isolation and improving water supply. Furthermore, the raw materials we use contain, on average, a minimum of **35% of recycled materials**.

Finally, our sense of responsibility for a lower environmental impact is witnessed by the **separate collection** in which we are committed over the 50%.

At SM'art we therefore invest in environmental sustainability and are committed to building a greener and human-sized world: our products are destined to enter the homes and daily lives of the final user and it is important for us that they convey our message and **our commitment to a better future**.

Product range

We produce an exclusive range of coordinated products to fulfil the client needs.



MFC Melamine Panels

We produce melamine boards with high technical and aesthetic features in many thicknesses and various substrates. We create realizations with Synchronized finishes, deeply embossed structures and unique decors.



HPL High Pressure Laminates

All the items of the melamine panels range have a perfect coordinated 3050×2050 mm HPL laminates, with identical decors and finishes, even with Synchropore. We produce also a range of 4200×1400 mm HPL laminates for tops, often coordinated with the melamine panels.



Compact HPL

We produce a range of Compact HPL often coordinated with melamine panels and HPL laminates. Compact HPL can have the core of various colors.



Matrix, Onda

We produce a range of panels with high visual effects, particularly indicated for the interior decoration. Matrix is made of a methacrylate core surfaced with HPL and then machined to be backlit. Onda is an MDF panel engraved with very deep sculptures.

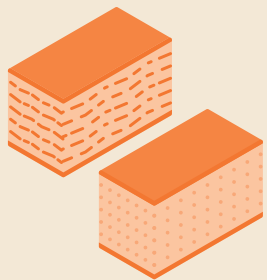


ABS edges

The whole range of melamine panels and laminates has the matching ABS edge. We put a lot of effort to get a perfect coordination between the edges and the surfaces.

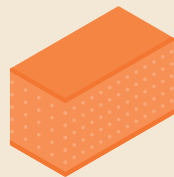
Solutions

MFC Melamine Panels can be produced with various cores or solutions.



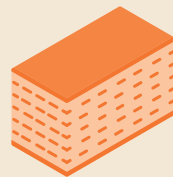
Particleboard and MDF

We offer particleboard and MDF substrates in Standard, Hydro with high moisture resistance, Euroclass B with fire retardant properties, EPA with reduced formaldehyde content in conformity with USA standard.



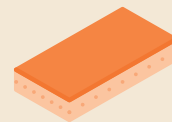
Compact Board

Compact Board is an MDF panel with black core.



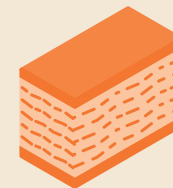
DWELS

Poplar OSB that can be surfaced with most of the decors and textures of the range. DWELS has high performance: lower water absorption, no added formaldehyde, light, very resistant to flexion and screw tear.



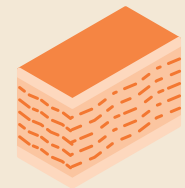
MDF one side

We manufacture thin MDF boards surfaced on one side, particularly indicated for interior doors.



HPB High Pressure Board

HPB is a solution that we can produce with all the decors, textures and substrates of our range. It consists of a laminate pressed directly on the required board. The customer won't need the gluing. The surface is much more resistant to hit and abrasion and can be used also horizontally.

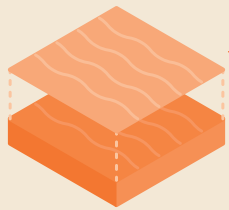


Chrome HPB

Chrome HPB has the same characteristics as HPB but with a white core laminate instead of brown core.

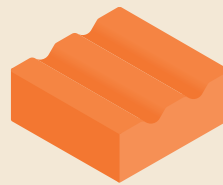
Strenghts

We are special for many reasons, here the most important ones.



Synchronized surfaces

The Synchronized surfaces have the **exact same layout in finish and decoration**, making the surface much more realistic and natural. We produce register surfaces on melamine panels, HPL laminates and compact HPL, making coordinates even more exclusive.



Textured finishes

Our aim is to create **emotional finishes** which give tactile and visual experiences.



Coordinated range

We offer a **range of coordinated products**: the melamine panel for the vertical surfaces, the HPL laminate for curved and horizontal surfaces, the self-supporting compact HPL for tops and tables, the ABS edge to finish the elements.



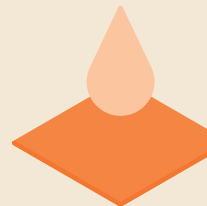
Availability and flexibility

We stock a great number of items in order to offer a **rapid and widespread** service even for small quantities. **Minimum orders** are accepted, even from production of a few units.



Impact resistance

We specialize in very deep finishes which are produced in most cases with a **heavy barrier between the base board and the melamine decor**. The barrier greatly increases the impact resistance of the surface.



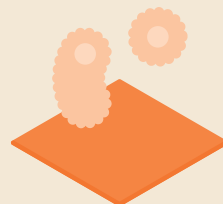
Water resistance

The surfaces of our panels are 100% melamine, therefore **completely waterproof**.



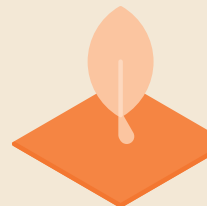
Easy to clean

Thanks to a very high resin content, our melamine surfaces are **low-porous** and therefore very easy to clean.



Resistance to bacteria

The surface of our panels, laminates and compacts, is impregnated with **100% melamine resins** and has strong antibacterial features.



Attention to the environment

All the raw materials from forest origin that we use belong to a **certified chain of custody** that guarantees responsible collection in the name of safeguarding biodiversity.

Products

P. 9 **Dune**

P. 12 **Reverso**

P. 15 **Aniline**

P. 18 **Annapurna**

P. 21 **Axe**

P. 24 **Canyon**

P. 27 **Chrome**

P. 30 **Club**

P. 33 **Eraora**

P. 36 **Italia**

P. 39 **Jungle**

P. 42 **Laccata**

P. 45 **Malibu**

P. 48 **Manhattan**

P. 51 **Met**

P. 54 **Metal**

P. 57 **Nirvana**

P. 60 **Olympus**

P. 63 **Rio**

P. 66 **Rockstar**

P. 69 **SoHo**

P. 72 **Speed**

P. 75 **Timber**

P. 78 **Trama**

P. 81 **Tuttifrutti**

P. 84 **Urban**

P. 87 **Vintage**

P. 90 **Wow!**

Lavorazioni speciali

P. 93 **Matrix**

P. 96 **Onda**

Dune

Designed by
Andrea Federici



Dune

Dune, the SM'art collection designed by **Andrea Federici**, is a range that evokes strong emotions, which makes memories resound and ignites the desire to explore.

The theme of the journey is taken as a pretext as a starting point for the story of an itinerary, a path that represents the fil rouge of the collection, which includes **eleven colors, including four solid colors, four woods and three cements.**

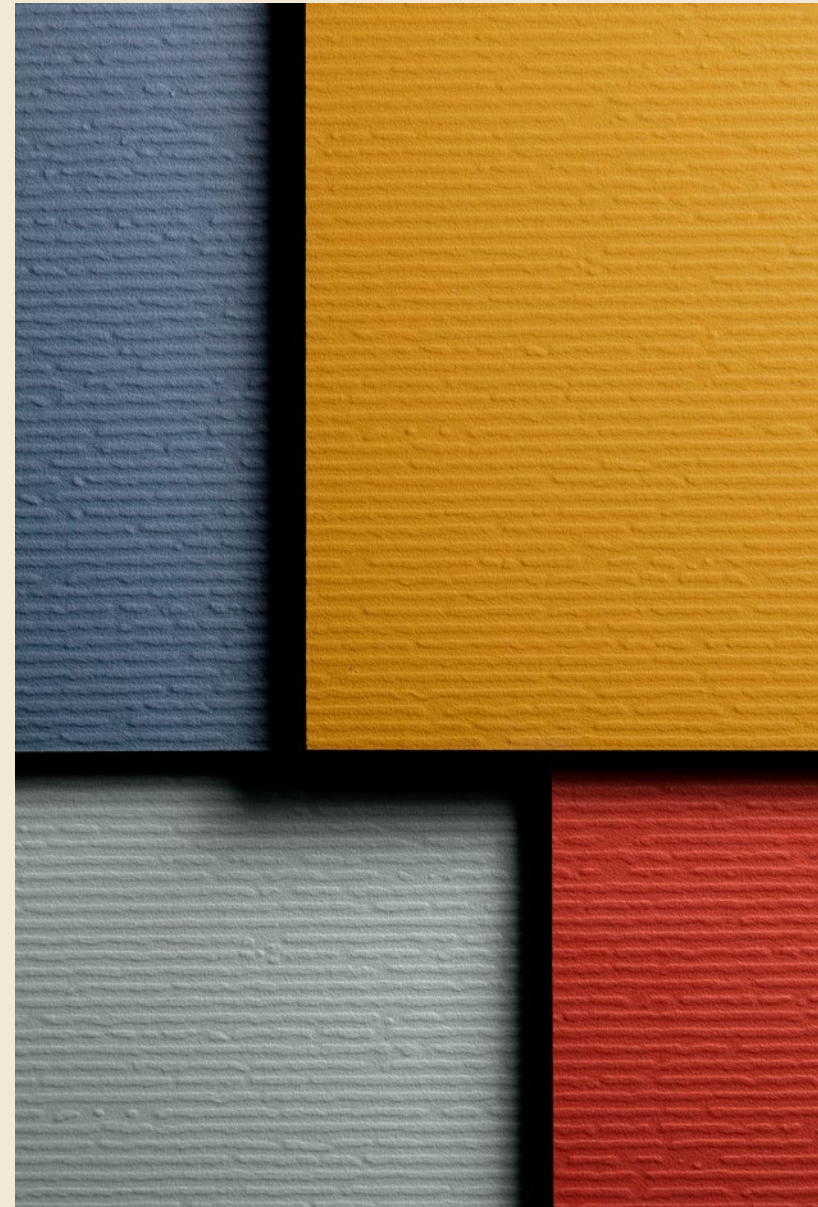
Dune is a **linear and irregular finish at the same time**, stimulating and pleasant: the ideal complement for all spaces, it will allow you to travel on the thread of memory and imagination.

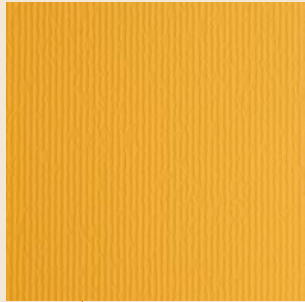
In line with the **Minimum 1. Today.** philosophy, for each decoration we stock three thicknesses of Melamine panel, HPL and three widths of ABS edging.

→ [Discover more on www.s-m-art.it](http://www.s-m-art.it)



reddot winner 2023



0037 | **Dune Curry**

M | H1

0038 | **Dune Paprika**

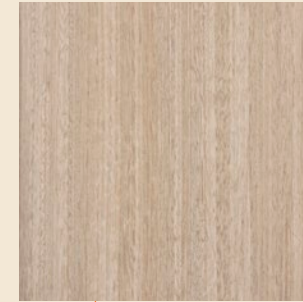
M | H1

0039 | **Dune Indigo**

M | H1

0040 | **Dune Kaffir**

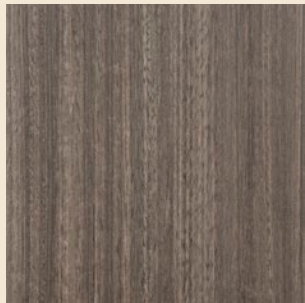
M | H1

D001 | **Dune Kalahari**

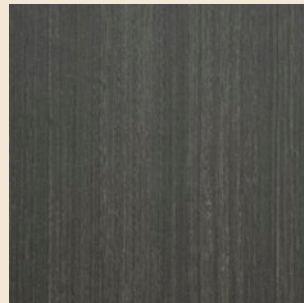
M | H1 | H2

D002 | **Dune Kobuk**

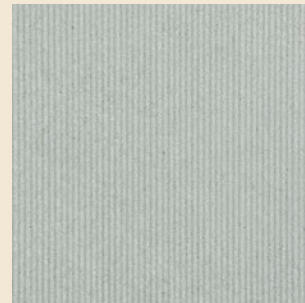
M | H1 | H2

D003 | **Dune Alacama**

M | H1 | H2

D004 | **Dune Thar**

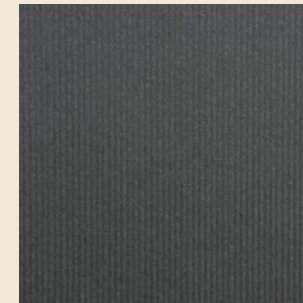
M | H1 | H2

D005 | **Dune**
Beton San Paolo

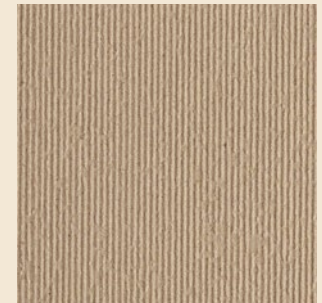
M | H1 | H2

D006 | **Dune**
Beton Marsiglia

M | H1 | H2 | C

D007 | **Dune**
Beton Tokyo

M | H1 | H2

D009 | **Dune**
Beton Londra

M | H1 | H2

Items in stock

M MFC 3050×2070×8-19-25 mm
ABS Edges 23-30 mm

H1 HPL 3050×2050×0,8 mm
ABS Edges 23-30 mm

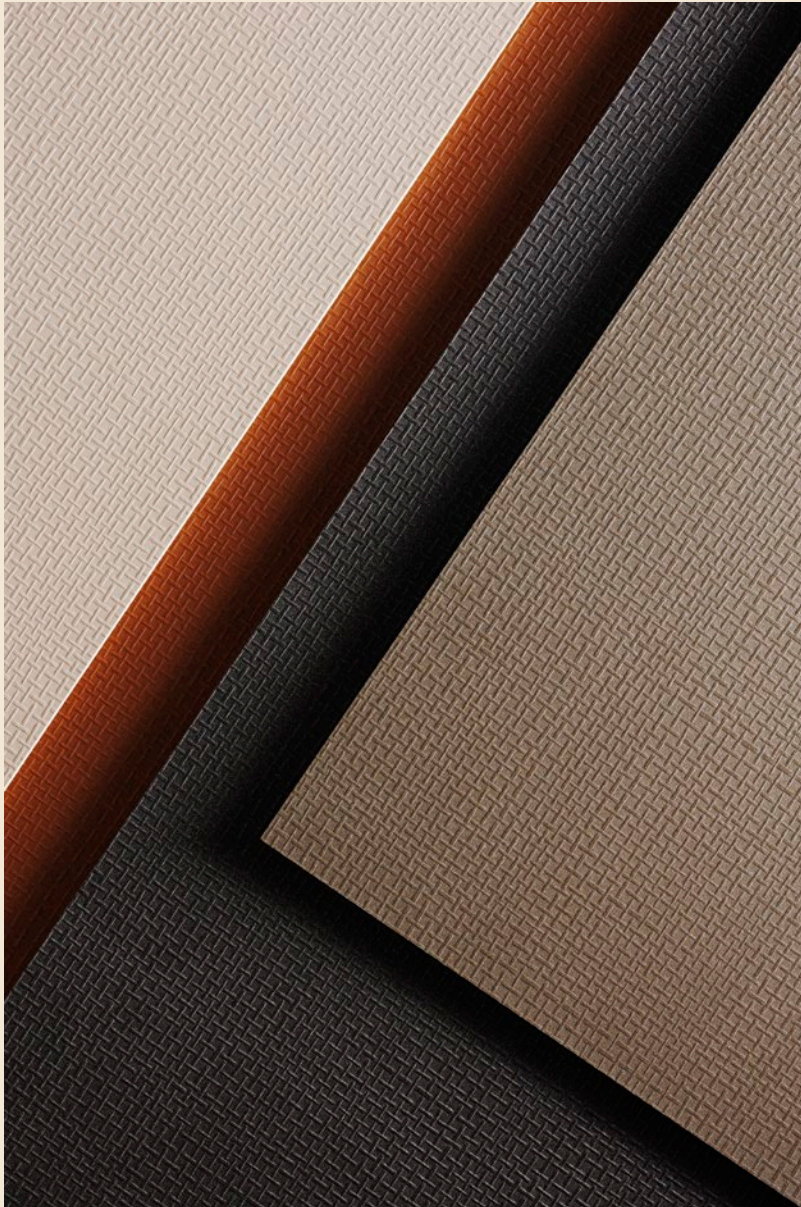
C Compact HPL 4200×1400×10 mm

H2 HPL 4200×1400×0,6 mm
ABS Edges 44 mm

Reverso

Designed by
Rossi&Co.





Reverso

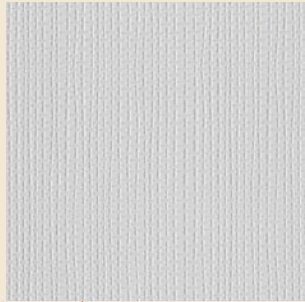
Reverso, the collection resulting from the **collaboration with Rossi&Co**, is a finish with a clear identity, designed to be reversible thanks to a zero waste solution.

A dense network of thin lines, inspired by the universe, that give shape to a rigorously pitched knit, capable at the same time of transmitting **lightness and movement**.

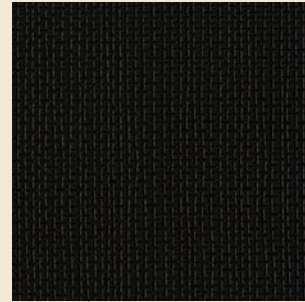
Reverso is available in a wide palette of colors and is divided into two thematic lines: the **Linea Tempo**, in the colors of the wood, and the **Linea Luce**, with its range of metallic colors

In line with the **Minimum 1. Today** philosophy, for each decoration we stock three thicknesses of Melamine panel, HPL and two widths of ABS edging.

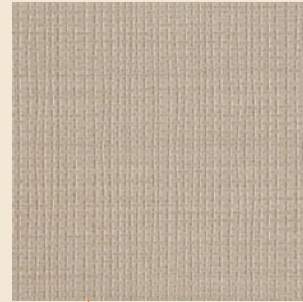
→ [Discover more on www.s-m-art.it](http://www.s-m-art.it)

3096 | **Reverso Bianco**

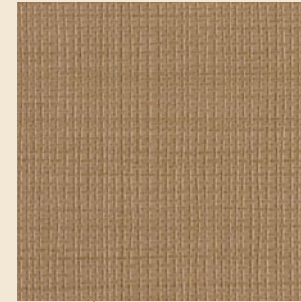
M | H

3190 | **Reverso Nero**

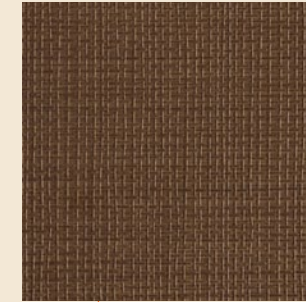
M | H

RE01 | **Reverso Alba**

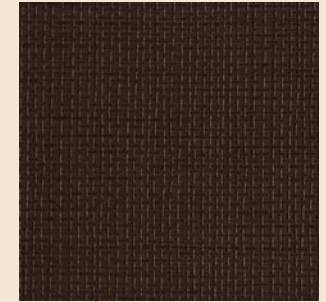
M | H

RE02 | **Reverso Meriggio**

M | H

RE03 | **Reverso
Crepuscolo**

M | H

RE04 | **Reverso Eclisse**

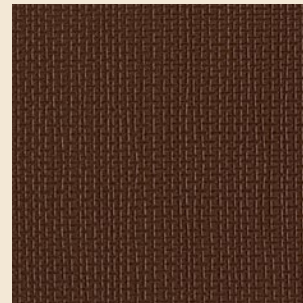
M | H

RE05 | **Reverso Notte**

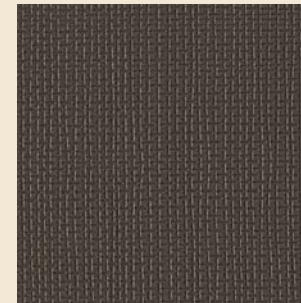
M | H

RE08 | **Reverso Bagliore**

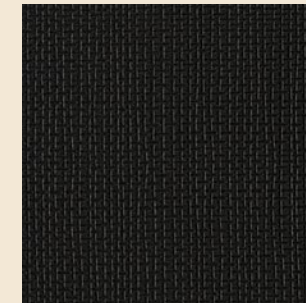
M | H

RE09 | **Reverso Scintilla**

M | H

RE10 | **Reverso Riflesso**

M | H

RE11 | **Reverso
Penombra**

M | H

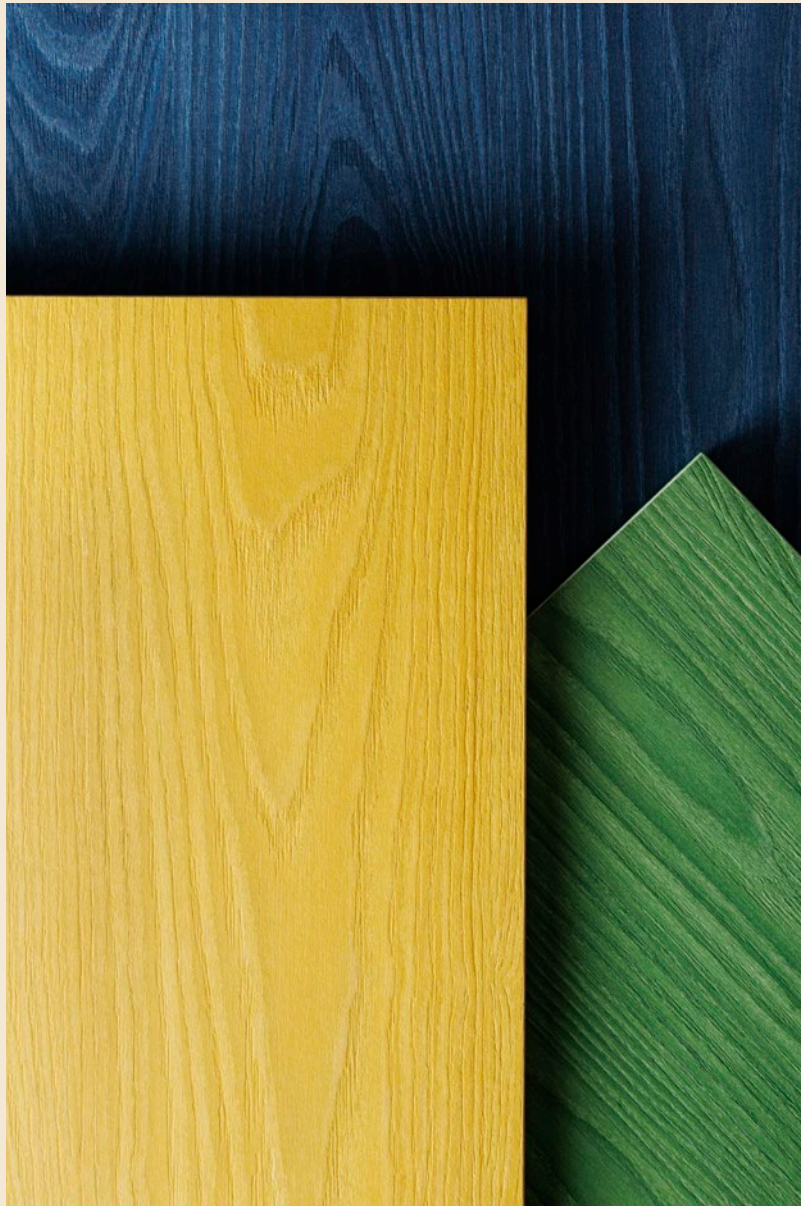
Items in stock

M MFC 3050×2070×8-19-25 mm
ABS Edges 23-30 mm

H HPL 3050×2050×0,8 mm
ABS Edges 23-30 mm

Aniline





Aniline

Aniline is a SM'art range in **bright, fresh, fun colours** accompanied by a register embossed pore finish.

The colour of the aniline shades reflects the **Mediterranean landscape** and inspiring dreams of cruising around the Greek islands.

We present Aniline in a wide range of coordinated products, allowing the design of the most varied interiors with just one surface.

→ [Discover more on www.s-m-art.it](http://www.s-m-art.it)

In line with the **Minimum 1. Today.** philosophy, for each decoration, SM'art stocks three thicknesses of Melamine panel, register embossed HPL and two widths of ABS edging.



A020

Aniline Santorini**M** | **H**

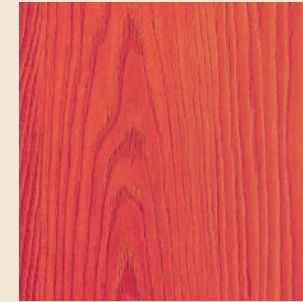
A021

Aniline Mykonos**M** | **H**

A022

Aniline Skopelos**M** | **H**

A023

Aniline Zante**M** | **H**

A024

Aniline Skiathos**M** | **H****Items in stock****M** MFC 3050×2070×8-19-25 mm
ABS Edges 23-30 mm**H** HPL 3050×2050×0,8 mm
ABS Edges 23-30 mm

Annapurna





Annapurna

Annapurna is a range of postforming decorative laminates characterised by a **very deep finish with steep peaks, deep cracks** and enhanced by the contrasts between polished and matt areas.

This finish is available in **plain colours or stone effects**.

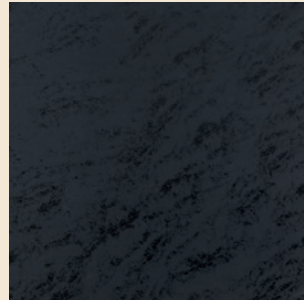
Annapurna can also be supplied in the Chrome version with the same colour as the surface running all the way through. The fact that Annapurna Chrome is coloured all the way through eliminates the classic brown line that characterises laminate.

Once glued onto the support and edged with the same laminate, Annapurna Chrome gives the impression of being a **single block of stone**.

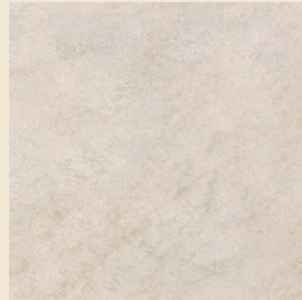
→ [Discover more on www.s-m-art.it](http://www.s-m-art.it)



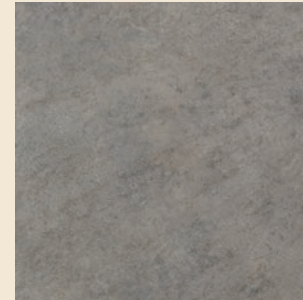
3096

Annapurna
Bianco**H** | **C1** | **C2**

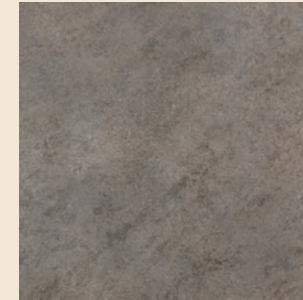
3190

Annapurna
Nero**H** | **C1** | **C2**

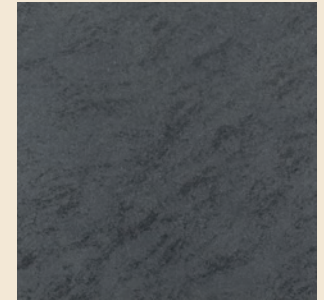
A025

Annapurna
Magnolia**H**

A026

Annapurna
Cement**H**

A027

Annapurna
Clay**H**

A028

Annapurna
Pitch**H** | **C1****Items in stock****H** HPL 4200×1400×0,6 mm
ABS Edges 44 mm**C1** Compact HPL 4200×1400×10 mm**C2** Compact HPL 4200×1400×12 mm

Axe



Axe

Axe is an **exciting, modern finish** which won't go unnoticed, matched with minimal and linear decorations.

In line with the **Minimum 1. Today.** philosophy, for each decoration, SM'art stocks three thicknesses of Melamine panel, HPL and two widths of ABS edging.

→ [Discover more on www.s-m-art.it](http://www.s-m-art.it)

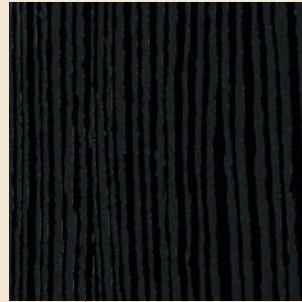


3096 | **Axe Bianco**

M | H

3151 | **Axe Tortora**

M | H

3190 | **Axe Nero**

M | H

4208 | **Axe Rovere**

M | H

4290 | **Axe Ebano**

M | H

4397 | **Axe Teak**

M | H1

4399 | **Axe Noce**

M | H

4521 | **Axe Olmo Fumé**

M | H

4522 | **Axe Olmo Rosé**

M | H

4523 | **Axe Olmo Dekapé**

M | H

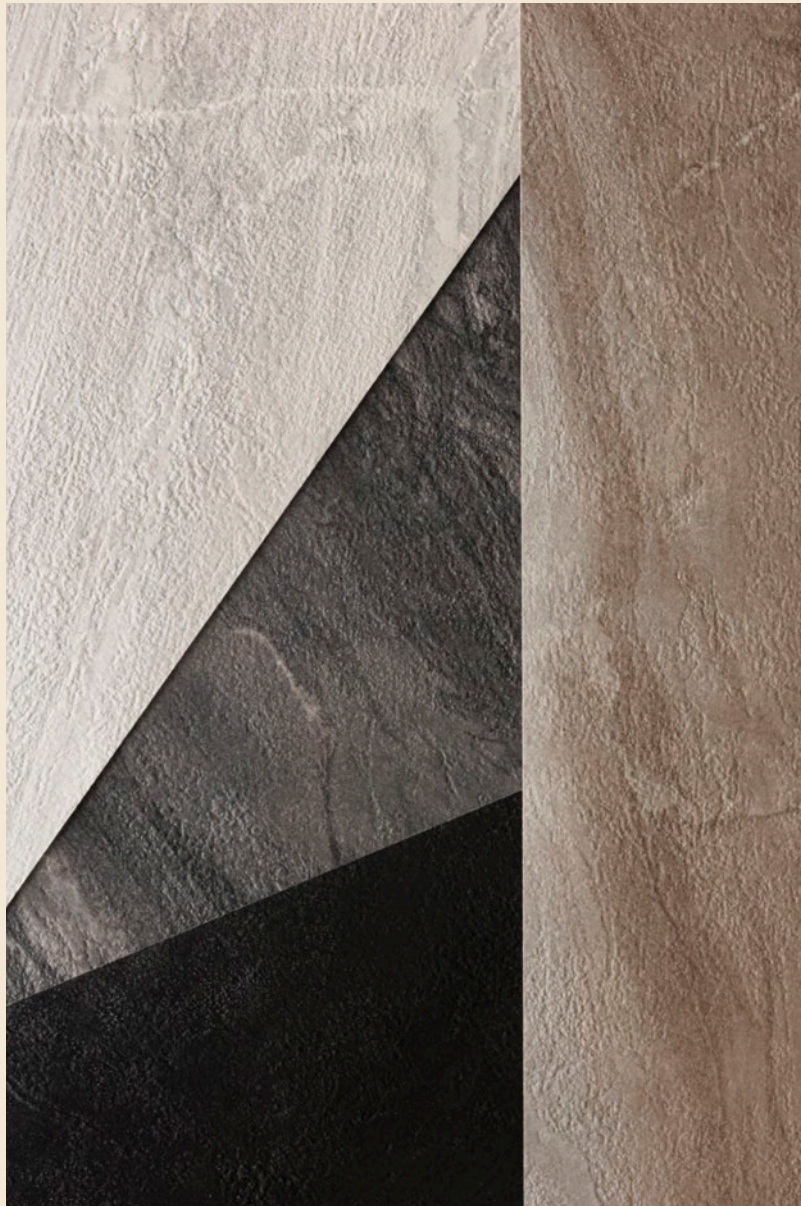
Items in stock

M MFC 3050×2070×8-19-25 mm
ABS Edges 23-30 mm

H HPL 3050×2050×0,8 mm
ABS Edges 23-30 mm

Canyon





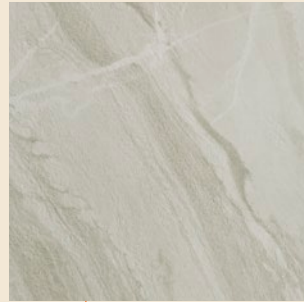
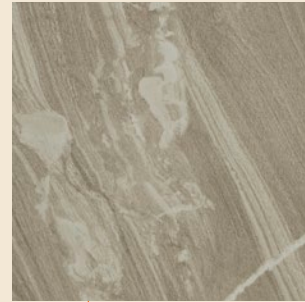
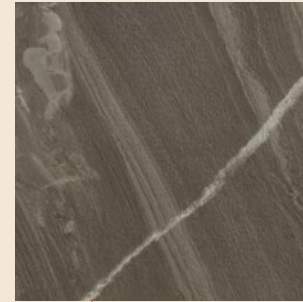
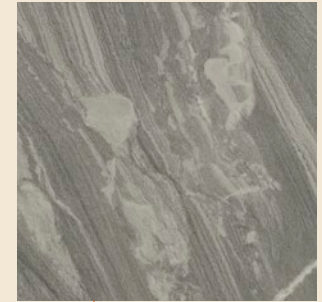
Canyon

One of a kind marble, Canyon shows different features perfectly blended among them.

The various elements are shaping big and **smooth longitudinal “movements”**, crossed by diagonal veins. The finish, synchronized, has a **sandblasting effect** enriched by two matt levels. The peculiarity of the texture is also given by the **different deepness**.

The surface is divided in deeply structured and super matt areas spaced out by flat and matt areas. All these characteristics give a **warm and natural touch**, to rival the best master craftsmen!

→ [Discover more on www.s-m-art.it](http://www.s-m-art.it)

3190 | **Canyon Nero****H**CA01 | **Canyon Palladium****H**CA02 | **Canyon Zirconium****H**CA03 | **Canyon Selenium****H**CA04 | **Canyon Iceberg****H C1**CA05 | **Canyon Silicon****H C1 C2**CA06 | **Canyon Carbon****H C1****Items in stock****H** HPL 4200×1400×0,6 mm
ABS Edges 44 mm**C1** Compact HPL 4200×1400×10 mm**C2** Compact HPL 4200×1400×12 mm

Chrome



Chrome

Chrome is a range of decorative high pressure laminates with the **same colour on the surface and all the way through.**

Being dyed right through, Chrome does not have the classic brown line that characterises laminate. Once glued onto the support and edged with the same laminate, Chrome gives the **impression of being a single block of material.**

The colour range of Chrome is available in various finishes to suit different requirements. Chrome can also be made to order as MFC on any support.

→ [Discover more on www.s-m-art.it](http://www.s-m-art.it)

In line with the **Minimum 1. Today.** philosophy, for each decoration we stock HPL, while the Melamine panel is available to order only.

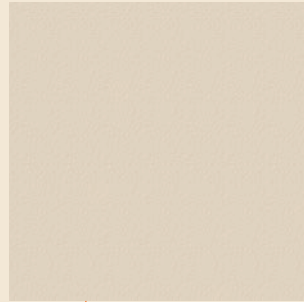




0030

Axe
White Chrome

M | **H**



0030

Cera
White Chrome

M | **H**



0030

Laccata
White Chrome

M | **H**



0030

SoHo
White Chrome

M | **H**



0030

Timber
White Chrome

M | **H**



0030

Trama
White Chrome

M | **H**



0030

Vintage
White Chrome

M | **H**



0030

Wow!
White Chrome

M | **H**

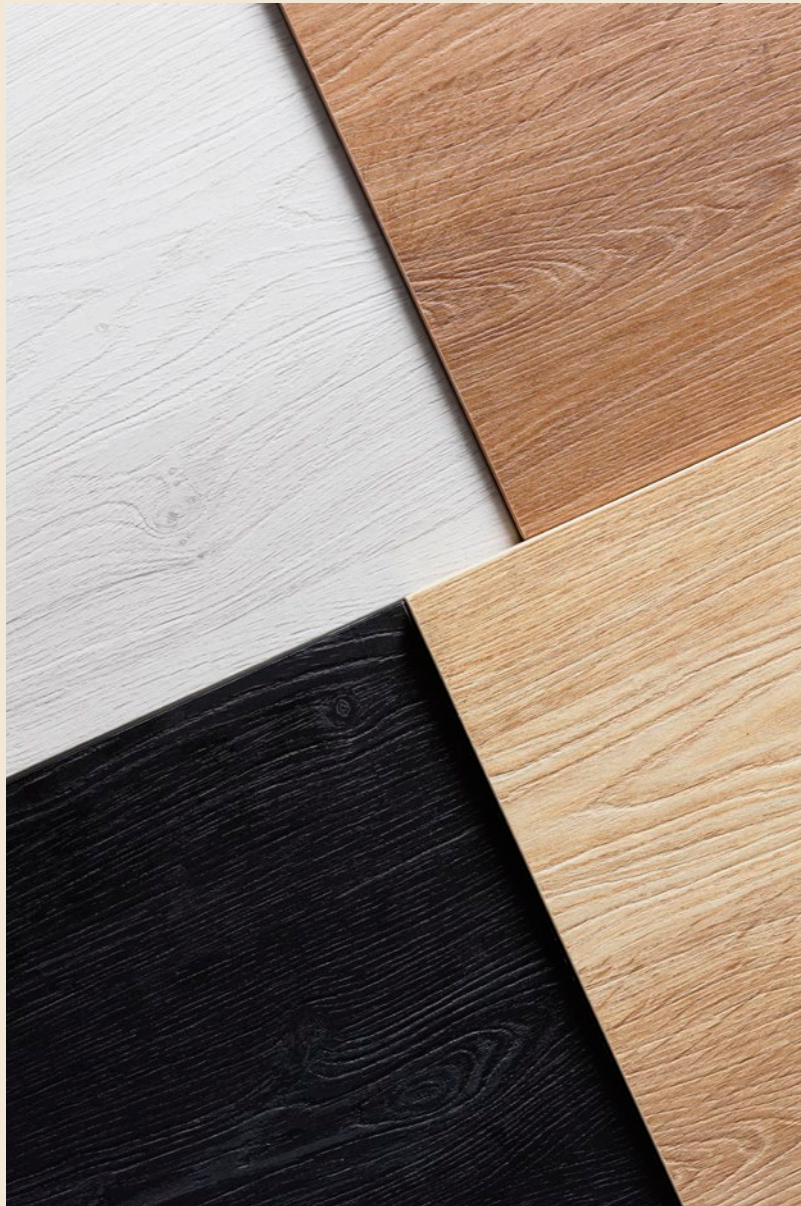
Items in stock

M MFC 3050×2070×8-19-25 mm
ABS Edges 23-30 mm

H HPL 3050×2050×1 mm
ABS Edges 23-30 mm

Club





Club

Club is the quintessence of the Synchro woods designs. The texture with its clear pore and the different glossy levels gives a warm effect to the creation.

The pattern gently interchange planks of different dimensions and shapes. The balanced colours make elegant the **rustic design**. Join our Club!

In line with the **Minimum 1. Today.** philosophy, for each decoration we stock three thicknesses of Melamine panel, register embossed HPL and three widths of ABS edging.

→ [Discover more on www.s-m-art.it](http://www.s-m-art.it)

3096 | **Club Bianco**

M	H1	H2	C1
---	----	----	----

3190 | **Club Nero**

M	H1	H2
---	----	----

c001 | **Club Tennis**

M	H1	H2	C1
---	----	----	----

c002 | **Club Golf**

M	H1	H2
---	----	----

c003 | **Club Polo**

M	H1	H2	C1	C2
---	----	----	----	----

c004 | **Club Yacht**

M	H1	H2	C1
---	----	----	----

c005 | **Club Cricket**

M	H1	H2	C1
---	----	----	----

c006 | **Club Fight**

M	H1	H2
---	----	----

c007 | **Club Ski**

M	H1	H2
---	----	----

c008 | **Club Rugby**

M	H1	H2
---	----	----

s000 | **Club Silverdust**

M	H1
---	----

Items in stock

M MFC 3050×2070×8-19-25 mm
ABS Edges 23-30 mm

H1 HPL 3050×2050×0,8 mm
ABS Edges 23-30 mm

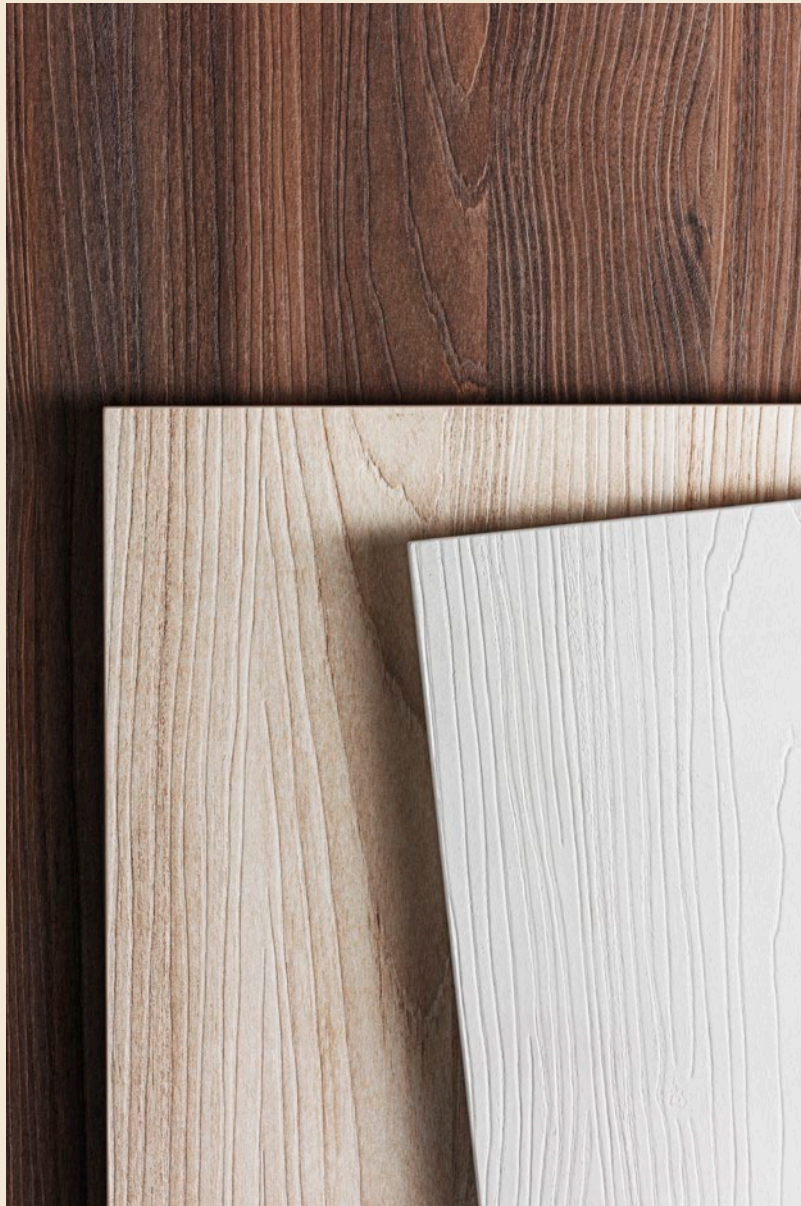
H2 HPL 4200×1400×0,6 mm
ABS Edges 44 mm

C1 Compact HPL 4200×1400×10 mm

C2 Compact HPL 4200×1400×12 mm

Eraora





Eraora

Eraora is our **first register embossed product**. The modern and sophisticated woodgrain is accompanied by a very matt, deep, exciting Synchropore finish and with a natural touch of brushed timber.

What makes Eraora special is the register embossed finish with a **design that is very elegant** without losing its rustic structure, the end result being rather special and refined. Eraora is available in a wide range of coordinating products, to design the most varied interiors with just one surface, including the world preview of Synchropore laminate.

In line with the **Minimum 1. Today** philosophy, for each decoration, SM'art stocks three thicknesses of Melamine panel, register embossed HPL and two widths of ABS edging.

→ [Discover more on www.s-m-art.it](http://www.s-m-art.it)



E000

Eraora Bianco**M** | **H**

E001

Eraora Crudo**M** | **H**

E002

Eraora Dorato**M** | **H**

E003

Eraora Scottato**M** | **H**

E004

Eraora Tostato**M** | **H**

E005

Eraora Bruciato**M** | **H****Items in stock**

M MFC 3050×2070×8-19-25 mm
ABS Edges 23-30 mm

H HPL 3050×2050×0,8 mm
ABS Edges 23-30 mm

Italia



Italia

Italia is an **elegant register embossing proposal**, it is brand new while winking at tradition.

The homogeneous layout allows a **great variation of uses and compositions**. The deep and net pore looks incredibly realistic, while the smooth surface is enhanced by the iridescent appearance of its decors, giving Italia a **brilliant and original style**.

→ [Discover more on www.s-m-art.it](http://www.s-m-art.it)

In line with the **Minimum 1. Today.** philosophy, for each decoration, SM'art stocks three thicknesses of Melamine panel, register embossed HPL and two widths of ABS edging.





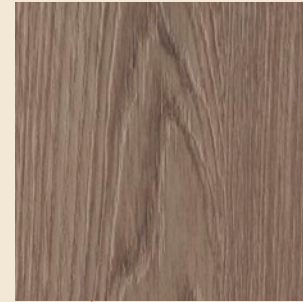
IT02

Italia Venezia**M** | **H**

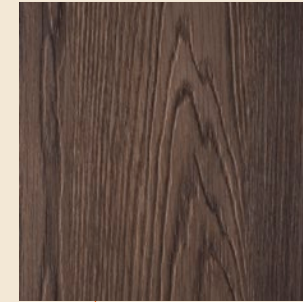
IT03

Italia Torino**M** | **H**

IT04

Italia Milano**M** | **H**

IT05

Italia Roma**M** | **H**

IT06

Italia Firenze**M** | **H**

IT07

Italia Bologna**M** | **H****Items in stock**

M MFC 3050×2070×8-19-25 mm
ABS Edges 23-30 mm

H HPL 3050×2050×0,8 mm
ABS Edges 23-30 mm

Jungle





Jungle

Jungle is a snappy collection. The decors have as principal feature a **refined simplicity** which allows a versatile use.

The structure, with its **authentic and emotional touch**, shows two different super-matt levels which give intensity to the finished product.

In line with the **Minimum 1. Today.** philosophy, for each decoration we stock three thicknesses of Melamine panel, register embossed HPL and two widths of ABS edging.

→ [Discover more on www.s-m-art.it](http://www.s-m-art.it)

J001 | **Jungle Amazonia**

M	H1	H2
---	----	----

J002 | **Jungle Sumatra**

M	H1	H2
---	----	----

J003 | **Jungle Borneo**

M	H1	H2
---	----	----

J004 | **Jungle Congo**

M	H1	H2
---	----	----

J005 | **Jungle Papua**

M	H1	H2
---	----	----

Items in stock

M MFC 3050×2070×8-19-25 mm
ABS Edges 23-30 mm

H1 HPL 3050×2050×0,8 mm
ABS Edges 23-30 mm

H2 HPL 4200×1400×0,6 mm
ABS Edges 44 mm

Laccata

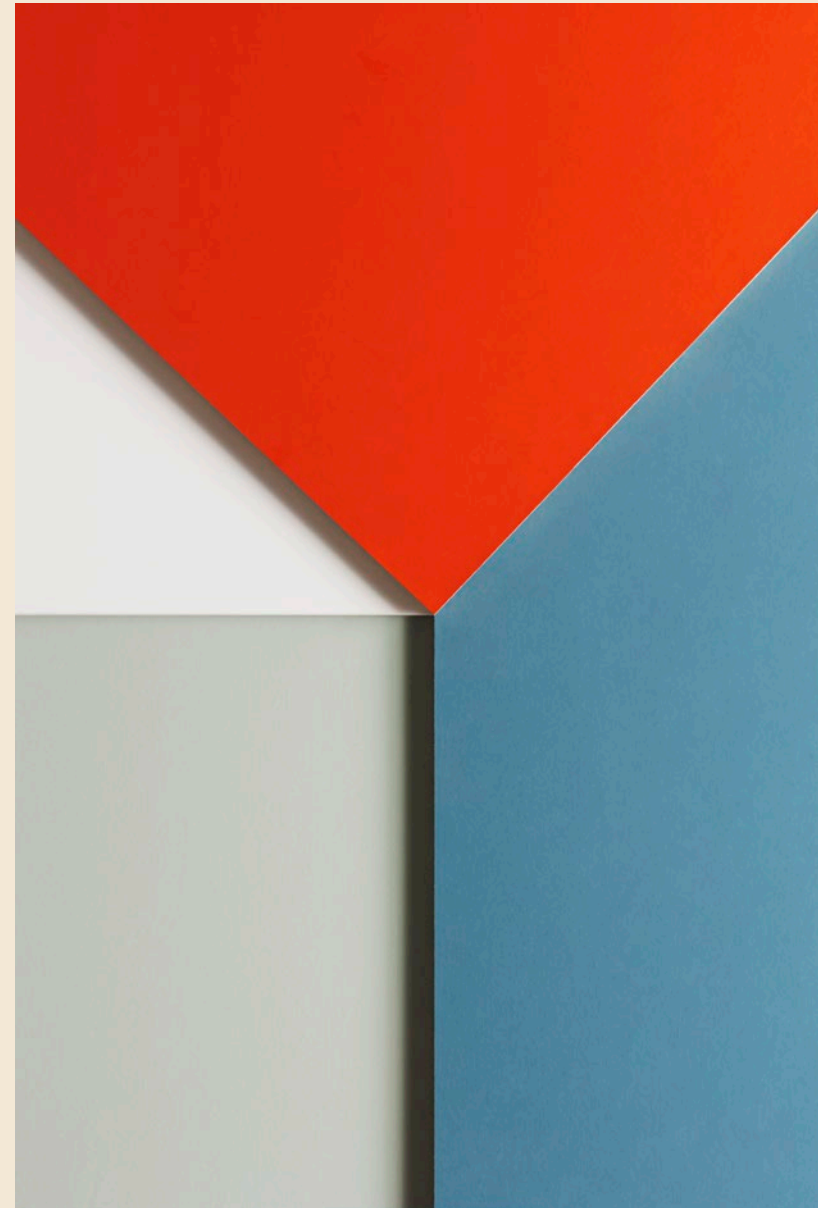


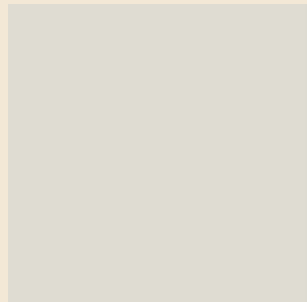
Laccata

Laccata is a **minimal and extremely tactile finish**, suitable for refined and modern interiors.

In line with the **Minimum 1. Today.** philosophy, for each decoration we stock three thicknesses of Melamine panel, HPL and two widths of ABS edging.

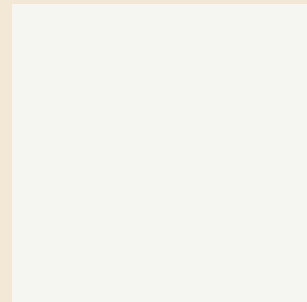
→ [Discover more on www.s-m-art.it](http://www.s-m-art.it)





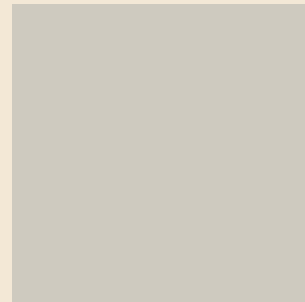
0010 | **Laccata**
Grigio Caolino

M | **H2**



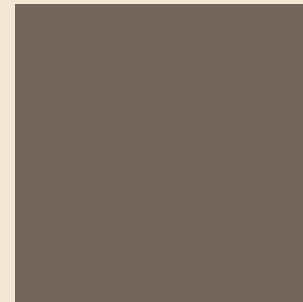
0013 | **Laccata Polo**

M | **H2**



0014 | **Laccata Gobi**

M | **H2**



0015 | **Laccata Visione**

M | **H2**



0037 | **Laccata Curry**

M | **H2**



0038 | **Laccata Paprika**

M | **H2**



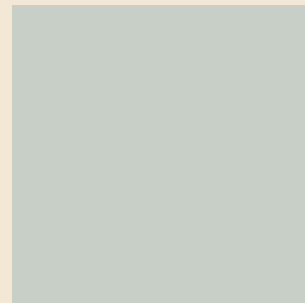
0039 | **Laccata Indigo**

M | **H2**



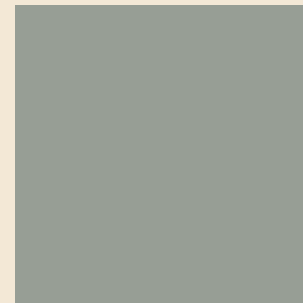
0040 | **Laccata Kaffir**

M | **H2**



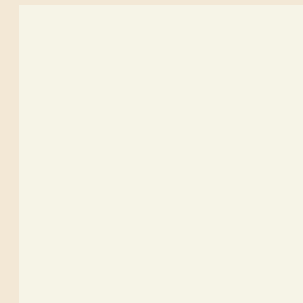
0041 | **Laccata Atmosfera**

M | **H1**



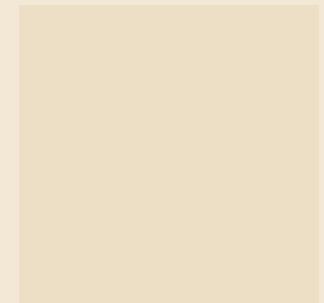
0042 | **Laccata**
Sottobosco

M | **H1**



3096 | **Laccata Bianco**

M | **H2**



3104 | **Laccata Corda**

M | **H2**



3151 | **Laccata Tortora**

M | **H2**



3155 | **Laccata Antracite**

M | **H2**

Items in stock

M MFC 3050×2070×8-19-25 mm
ABS Edges 23-30 mm

H1 HPL 3050×2050×0,8 mm
ABS Edges 23-30 mm

H2 HPL 3050×2050×1 mm
ABS Edges 23-30 mm

Malibu





Malibu

Malibu is redefining the concept of elegance. **The very contrasted finish and layout**, matched with refined tones, create a revolutionary collection.

The synchronized finish on the two sides gives inimitable emotions thanks to a **very natural touch**. Be tempted by the exotic luxury of Malibu.

In line with the **Minimum 1. Today** philosophy, for each decoration, SM'art stocks three thicknesses of Melamine panel, register embossed HPL and two widths of ABS edging.

→ [Discover more on www.s-m-art.it](http://www.s-m-art.it)

MA01 | **Malibu Paradise**

M	H
---	---

MA02 | **Malibu Cove**

M	H
---	---

MA05 | **Malibu Lagoon**

M	H
---	---

MA07 | **Malibu
Santa Monica**

M	H
---	---

MA08 | **Malibu Hermosa**

M	H
---	---

Items in stock

M MFC 3050×2070×8-19-25 mm
ABS Edges 23-30 mm

H HPL 3050×2050×0,8 mm
ABS Edges 23-30 mm

Manhattan



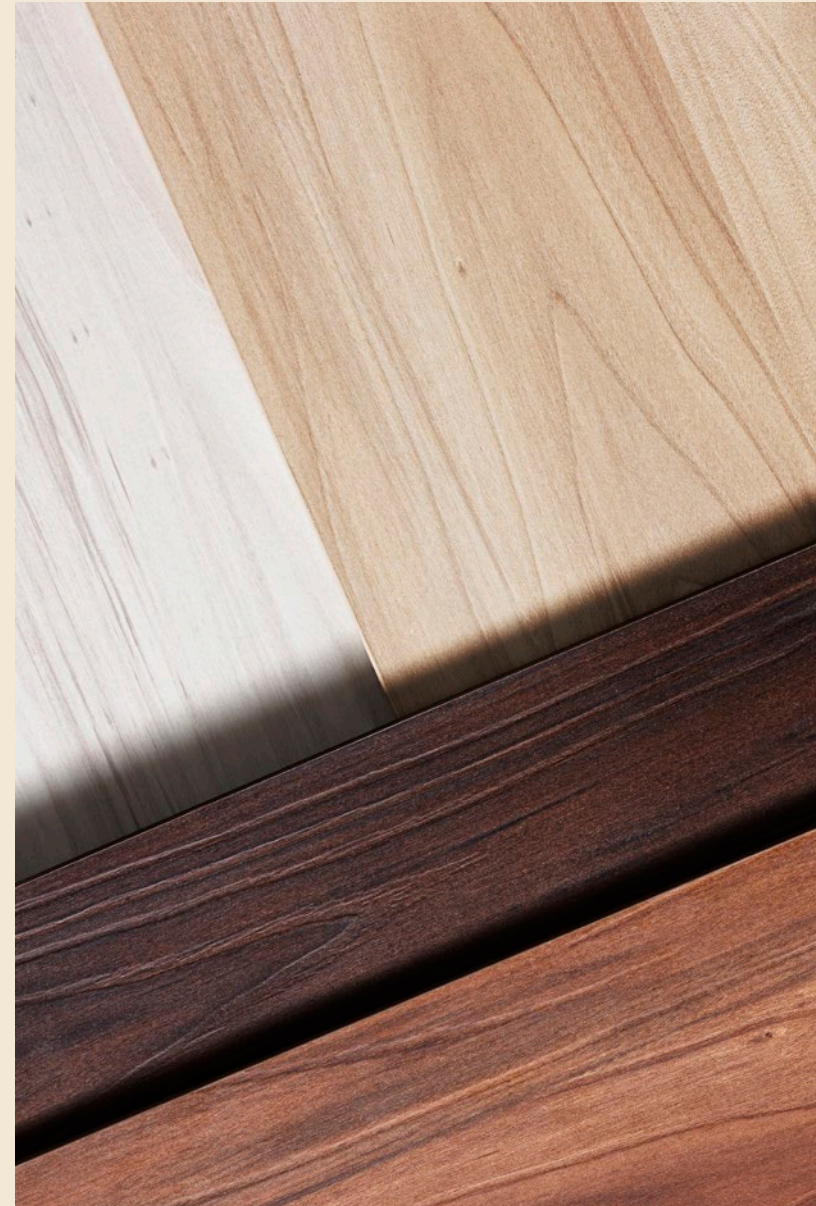
Manhattan

Elegant and extreme this is Manhattan. Its **three shading levels of matt** give you tactile and visual sensations.

The finish **smooth and deep** engraves the surface giving life to the board. The collection is composed by six decors that will match very well every kind of tonality in your furnishing.

→ [Discover more on www.s-m-art.it](http://www.s-m-art.it)

In line with the **Minimum 1. Today.** philosophy, for each decoration we stock three thicknesses of Melamine panel, register embossed HPL and two widths of ABS edging.

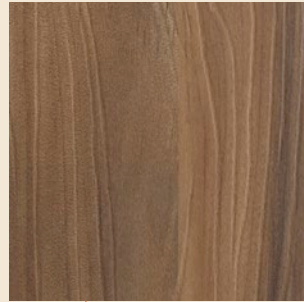




M020

Manhattan
Empire

M	H
---	---



M021

Manhattan
Chrisler

M	H
---	---



M022

Manhattan
Rockefeller

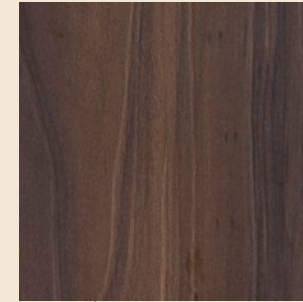
M	H
---	---



M023

Manhattan
Epic

M	H
---	---



M025

Manhattan
Central

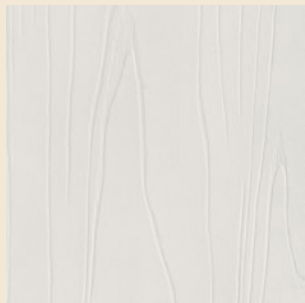
M	H
---	---



M026

Manhattan
Woolworth

M	H
---	---



S000

Manhattan
Silverdust

M	H
---	---

Items in stock

M MFC 3050×2070×8-19-25 mm
ABS Edges 23-30 mm

H HPL 3050×2050×0,8 mm
ABS Edges 23-30 mm

Met





Met

MET is inspired by the metropolis, the fulcrum of modern society, where cultural change is constantly evolving.

MET, characterized by an urban spirit, is made up of **metals with a longitudinal finish**, buildings that tend to the sky, like arrows pointing upwards, to witness unstoppable progress. The collection allows you to design and implement new ideas because it is free from constraints, to enhance the essential through the linearity of the decorations and textures.

In line with the **Minimum 1. Today.** philosophy, for each decoration, SM'art stocks three thicknesses of Melamine panel, register embossed HPL and two widths of ABS edging.

→ [Discover more on www.s-m-art.it](http://www.s-m-art.it)

ME01 | **Met Palladio**

M	H
---	---

ME02 | **Met Acciaio**

M	H
---	---

ME04 | **Met Brunito**

M	H
---	---

ME05 | **Met Piombo**

M	H
---	---

Items in stock

M MFC 3050×2070×8-19-25 mm
ABS Edges 23-30 mm

H HPL 3050×2050×0,8 mm
ABS Edges 23-30 mm

Metal





Metal

Metal is a range of **high pressure laminates made with an aluminium foil.**

The foils of aluminium are **very thin**, just 0,1 or 0,4 mm so that they can be processed using normal woodworking machinery.

The aluminium is protected with **anodization**. The anodizing process gives a more brilliant and stronger surface compared to the lacquering process. All these decors are suitable **for vertical use only**, due to their lack of resistance to scratches, scuffs and chemical products. Aluminium is very delicate and hot objects or sticky tape can ruin the surface.

The appearance of the **Metal changes when it is rotated** by 90° or 180°.

Metal can be cleaned with a **soft cloth and soap and water**. Solvents should be avoided as they could damage the surface.

Metal laminates must be **glued cold** or at quite low temperatures.

Coordinated ABS or CPL edging is also available.

→ [Discover more on www.s-m-art.it](http://www.s-m-art.it)



7135

Satinato+Film
Acciaio

H1



7777

Satinato+Film
Alluminio

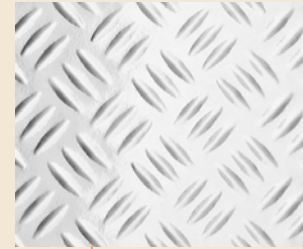
H1



A000

Fusion+Film
Alluminio Specchio

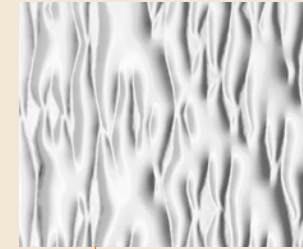
H3



A000

Grain+Film
Alluminio Specchio

H3



A000

Knot+Film
Alluminio Specchio

H3



A000

Lucida+Film
Alluminio Specchio

H2



A000

Planet+Film
Alluminio Specchio

H3



A000

Sixty's+Film
Alluminio Specchio

H3



A000

Twist+Film
Alluminio Specchio

H3



A001

Satinato+Film
Ottone

H1



A009

Fusion+Film
Ottone Specchio

H3



A009

Lucida+Film
Ottone Specchio

H2



A010

Diamond+Film
Canna di Fucile
Specchio

H3



A010

Fusion+Film
Canna di Fucile
Specchio

H3



A010

Lucida+Film
Canna di Fucile
Specchio

H2



A011

Corrugated+Film
Alluminio Longline

H3



A011

Zen+Film
Alluminio Longline

H3



A012

Corrugated+Film
Acciaio Longline

H3

Items in stock

H1 HPL 3050×1300 mm

H2 HPL 3050×1250 mm

H3 HPL 3050×1220 mm

Nirvana



Nirvana

Nirvana is a **materials inspired collection**. This family is composed by raw slabs matched with a structured finish, enhanced by a matt and gloss shading.

The décors show their brilliance thanks to the **pearlescent inks**.

→ [Discover more on www.s-m-art.it](http://www.s-m-art.it)

In line with the **Minimum 1. Today** philosophy, for each decoration we stock three thicknesses of Melamine panel, embossed HPL and three widths of ABS edging.



N001 | **Nirvana Platino**

M	H1	H2
---	----	----

N002 | **Nirvana Mercurio**

M	H1	H2	C1
---	----	----	----

N003 | **Nirvana Nichel**

M	H1	H2
---	----	----

N004 | **Nirvana Zinco**

M	H1	H2	C1	C2
---	----	----	----	----

N005 | **Nirvana Ferro**

M	H1	H2	C1
---	----	----	----

N006 | **Nirvana Rame**

M	H1	H2
---	----	----

N007 | **Nirvana Oro**

M	H1	H2
---	----	----

Items in stock

M MFC 3050×2070×8-19-25 mm
ABS Edges 23-30 mm

H1 HPL 3050×2050×0,8 mm
ABS Edges 23-30 mm

H2 HPL 4200×1400×0,6 mm
ABS Edges 44 mm

c1 Compact HPL 4200×1400×10 mm

c2 Compact HPL 4200×1400×12 mm

Olympus





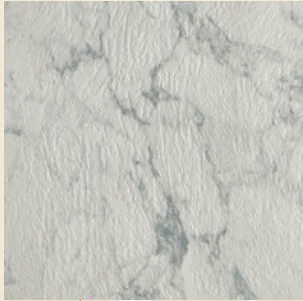
Olympus

Olympus is a **marbles range**.
This range is composed by decors
with a strong innovative character.

The common element between these marbles is the **absence of direction** of the designs and of the texture. The very deep structure of the finish is embellished by 4 levels of gloss.

In line with the **Minimum 1. Today** philosophy, for each decoration we stock three thicknesses of Melamine panel, embossed HPL and three widths of ABS edging.

→ [Discover more on www.s-m-art.it](http://www.s-m-art.it)



OL00 | **Olympus**
Aphrodite

M | H1 | H2 | C1 | C2



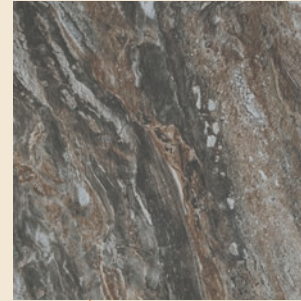
OL01 | **Olympus** Zeus

M | H1 | H2



OL02 | **Olympus** Athena

M | H1 | H2



OL03 | **Olympus**
Poseidon

M | H1 | H2



OL04 | **Olympus** Apollo

M | H1 | H2 | C1 | C2



OL05 | **Olympus** Hera

M | H1 | H2



OL06 | **Olympus** Hermes

H2



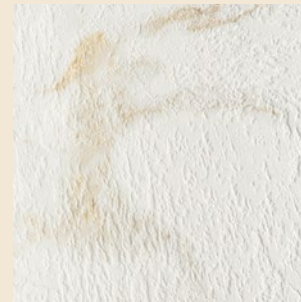
OL07 | **Olympus**
Dyonisus

M | H1 | H2 | C1 | C2



OL08 | **Olympus** Artemis

H2 | C1



OL09 | **Olympus**
Calacatta

M | H1 | H2

Items in stock

M MFC 3050×2070×8-19-25 mm
ABS Edges 23-30 mm

H1 HPL 3050×2050×0,8 mm
ABS Edges 23-30 mm

H2 HPL 4200×1400×0,6 mm
ABS Edges 44 mm

C1 Compact HPL 4200×1400×10 mm

C2 Compact HPL 4200×1400×12 mm

Rio



Rio

Stone **shaped through times**, Rio is now showing itself in all its beauty. The décor is composed by fine elements that are combining themselves with different density levels on the different parts of the board, giving to the designs a deepness effect.

The tonalities are **homogeneous with a strong character**. The texture with its touch is enhancing the finish product. Rio is a very versatile collection. It can be use in different applications, both vertical and horizontal, always giving value to the component.

→ [Discover more on www.s-m-art.it](http://www.s-m-art.it)

In line with the Minimum 1. **Today, philosophy**, for each decoration we stock three thicknesses of Melamine panel, HPL and three widths of ABS edging.



R005 | **Rio Grande**

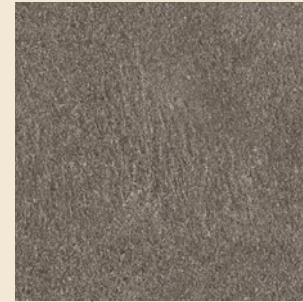
M	H1	H2
---	----	----

R006 | **Rio Bravo**

M	H1	H2
---	----	----

R007 | **Rio De La Plata**

M	H1	H2
---	----	----

R008 | **Rio Paranà**

M	H1	H2
---	----	----

R009 | **Rio Colorado**

M	H1	H2	C1	C2
---	----	----	----	----

R018 | **Rio Amazonia**

M	H1	H2
---	----	----

R019 | **Rio Branco**

M	H1	H2
---	----	----

R020 | **Rio Solimoes**

M	H1	H2
---	----	----

R021 | **Rio Negro**

M	H1	H2
---	----	----

Items in stock

M MFC 3050×2070×8-19-25 mm
ABS Edges 23-30 mm

H1 HPL 3050×2050×0,8 mm
ABS Edges 23-30 mm

H2 HPL 4200×1400×0,6 mm
ABS Edges 44 mm

C1 Compact HPL 4200×1400×10 mm

C2 Compact HPL 4200×1400×12 mm

Rockstar



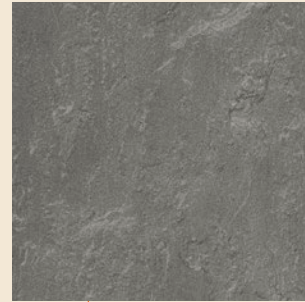
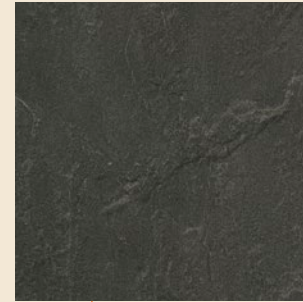
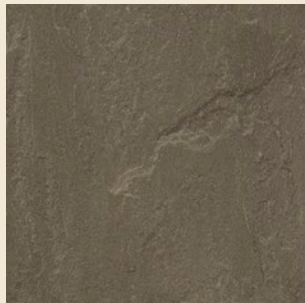


Rockstar

Synchronized mineral stone craved on **four levels of engravings**, astonishing for its three-dimensional effect.

The design with its shadow plays creates tactile expectations satisfied by the **strong finish**. The collection is composed by seven decors that embrace a wide range of tonalities.

→ [Discover more on www.s-m-art.it](http://www.s-m-art.it)

R010 | **Rockstar Lou****H**R011 | **Rockstar Bruce****H**R012 | **Rockstar Mick****H** **c**R013 | **Rockstar Rod****H**R014 | **Rockstar Freddie****H**R015 | **Rockstar Jim****H**R016 | **Rockstar Frank****H****Items in stock****H** HPL 4200×1400×0,6 mm
ABS Edges 44 mm**c** Compact HPL 4200×1400×10 mm

SoHo



SoHo

SoHo is a design developed with the precise aim of creating a classic melamine line using **new technologies and aesthetic solutions.**

It features timelessly elegant **half-flamed planked wood** all interpreted in a very modern synchronised key. The even background contrasts strongly with the pore. The background surface finish is smooth while the synchronised pore is deep and matt, creating an **exceptionally realistic effect.** SoHo is completely different from every other synchronised product available on the market, which tends to be excessively rustic.

→ [Discover more on www.s-m-art.it](http://www.s-m-art.it)

In line with the **Minimum 1. Today.** philosophy, for each decoration, SM'art stocks three thicknesses of Melamine panel, register embossed HPL and two widths of ABS edging.





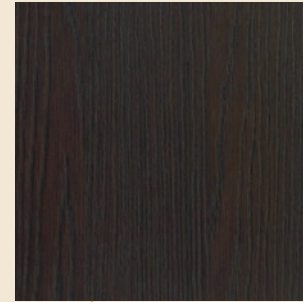
s201

SoHo Grand**M** | **H**

s202

SoHo Spring**M** | **H**

s203

SoHo Prince**M** | **H**

s204

SoHo Warwick**M** | **H**

s205

SoHo Broadway**M** | **H**

s210

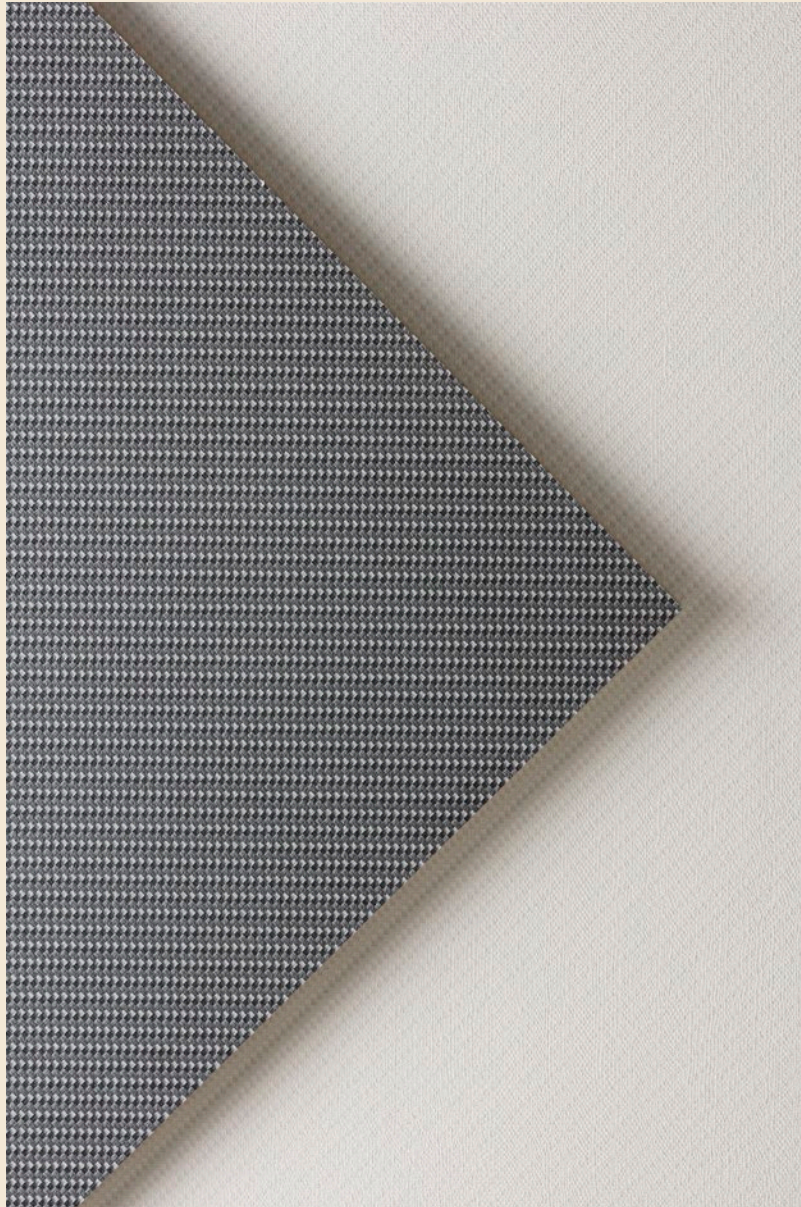
SoHo King**M** | **H****Items in stock**

M MFC 3050×2070×8-19-25 mm
ABS Edges 23-30 mm

H HPL 3050×2050×0,8 mm
ABS Edges 23-30 mm

Speed





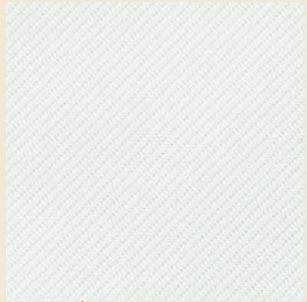
Speed

Motorbike or car?
What really matters is Speed.

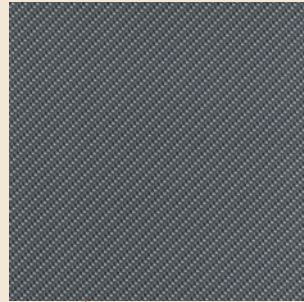
Pure adrenaline and high impact, with a structured matt finish, this collection is **inspired by the materials used in motor racing**. The three fibres in the collection will make you want to jump on the saddle or get behind the wheel.

→ [Discover more on www.s-m-art.it](http://www.s-m-art.it)

In line with the **Minimum 1. Today.** philosophy, for each decoration we stock three thicknesses of Melamine panel, HPL and two widths of ABS edging.

S301 | **Speed** Fiberglass

M	H
---	---

S303 | **Speed**
Carbon Fiber

M	H
---	---

Items in stock

- M** MFC 3050×2070×8-19-25 mm
ABS Edges 23-30 mm
- H** HPL 3050×2050×0,8 mm
ABS Edges 23-30 mm

Timber



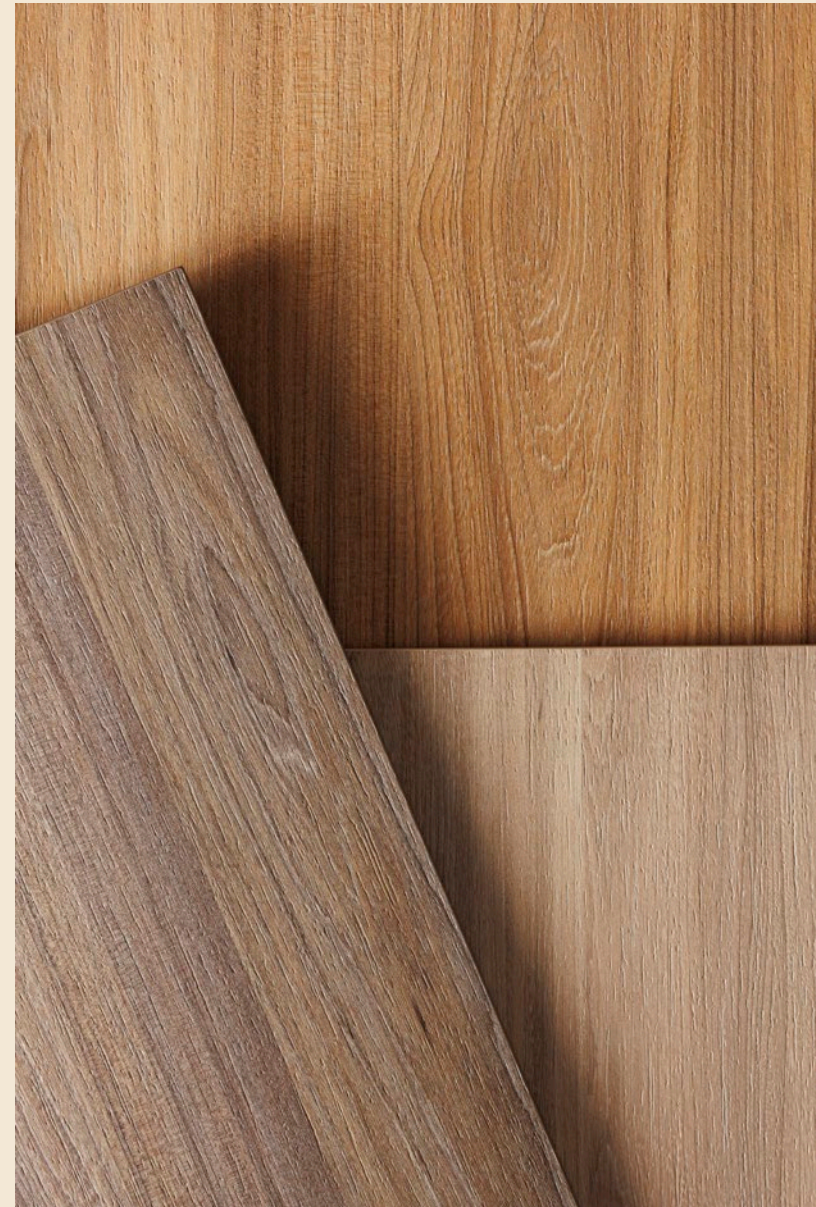
Timber

Timber is a very matt, structured finish with a pleasant texture and a **very deep, modern pore.**

It conveys the warmth of real wood and provides the answer for a **contemporary furnishing style.**

→ [Discover more on www.s-m-art.it](http://www.s-m-art.it)

In line with the **Minimum 1. Today.** philosophy, for each decoration we stock three thicknesses of Melamine panel, HPL and two widths of ABS edging.





4565

Timber
Olmo Miele

M	H
---	---



4583

Timber
Olmo Cipria

M	H
---	---



4584

Timber
Olmo Caffè

M	H
---	---

Items in stock

M MFC 3050×2070×8-19-25 mm
ABS Edges 23-30 mm

H HPL 3050×2050×0,8 mm
ABS Edges 23-30 mm

Trama





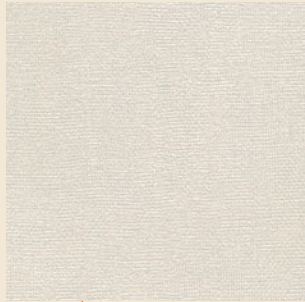
Trama

Completely waterproof and chemical proof, with excellent resistance to shocks, scratches and scuffs, this fabric is perfect for the upholstery of furnishings for public venues and home interiors as well as for lining the insides of furniture: **Trama is this and much, much more!**

The seductive texture of Trama is matched with fabulous shades, for an **elegant and de-structured** result.

→ [Discover more on www.s-m-art.it](http://www.s-m-art.it)

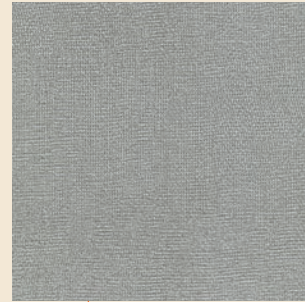
In line with the **Minimum 1. Today.** philosophy, for each decoration we stock three thicknesses of Melamine panel, HPL and two widths of ABS edging.



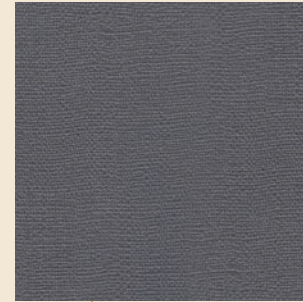
T001

Trama Mohair**M** | **H**

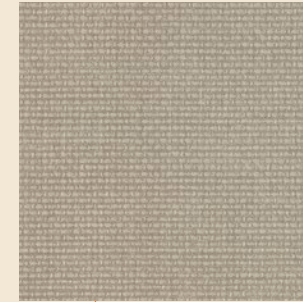
T002

Trama Shetland**M** | **H**

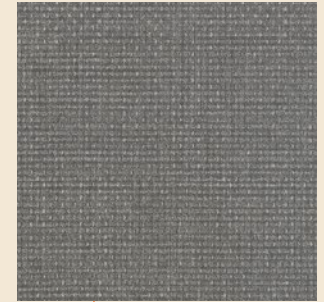
T003

Trama Tweed**M** | **H**

T004

Trama Oxford**M** | **H**

T006

Trama Jute**M** | **H**

T007

Trama Jersey**M** | **H****Items in stock**

M MFC 3050×2070×8-19-25 mm
ABS Edges 23-30 mm

H HPL 3050×2050×0,8 mm
ABS Edges 23-30 mm

Tuttifrutti



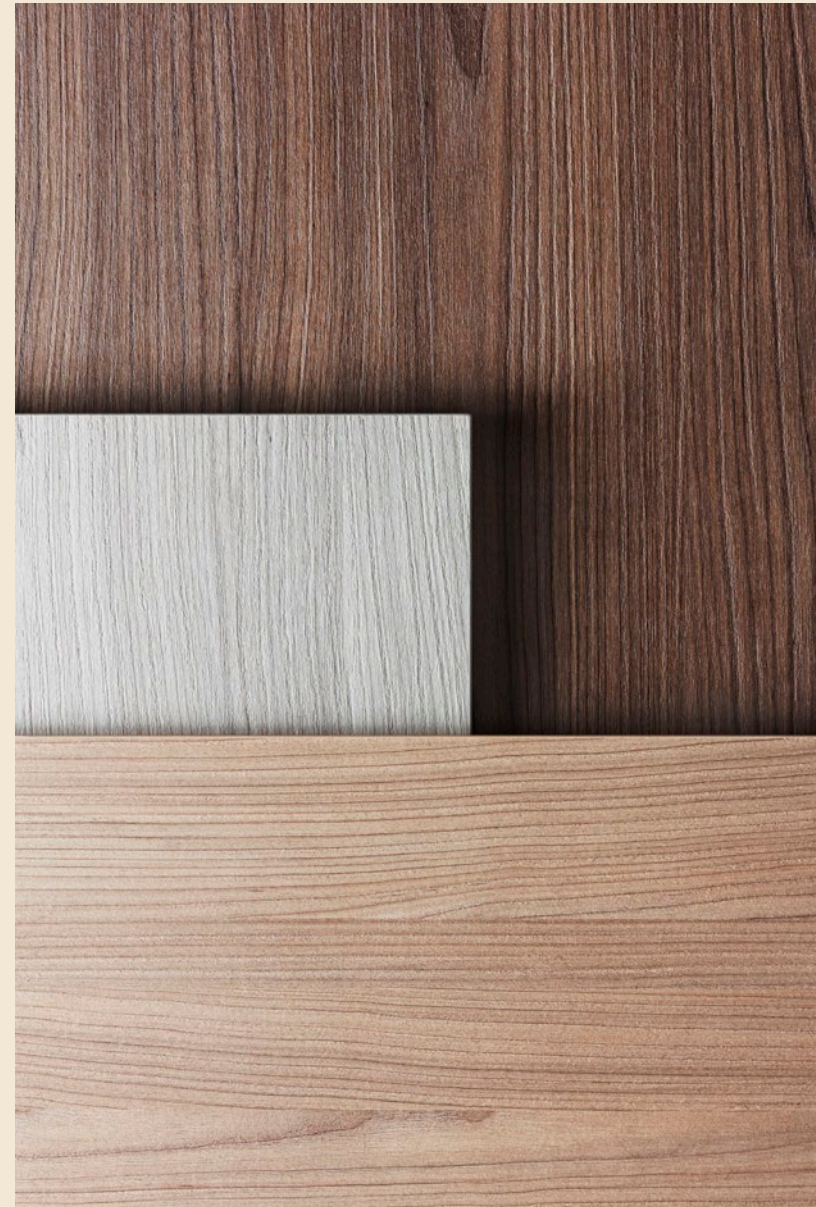
Tuttifrutti

The name says it all: **a modern, elegant woodgrain, with great character** and in fresh new colours reminiscent of summer in an orchard.

The **synchronised finish on both sides** is very effective, with a clear contrast between the hard part of the timber and the pore all enhanced by a rough veneer texture. Tuttifrutti represents euphoria in furnishing and the delicious juice of a fruit that you will never get tired of.

→ [Discover more on www.s-m-art.it](http://www.s-m-art.it)

In line with the **Minimum 1. Today.** philosophy, for each decoration, SM'art stocks three thicknesses of Melamine panel, register embossed HPL and two widths of ABS edging.



3096 | **Tuttifrutti Bianco****M** | **H**TU01 | **Tuttifrutti Cocco****M** | **H**TU03 | **Tuttifrutti Platano****M** | **H**TU04 | **Tuttifrutti Pesca****M** | **H**TU05 | **Tuttifrutti Fico****M** | **H**TU06 | **Tuttifrutti
Nespola****M** | **H**TU07 | **Tuttifrutti
Castagna****M** | **H****Items in stock****M** MFC 3050×2070×8-19-25 mm
ABS Edges 23-30 mm**H** HPL 3050×2050×0,8 mm
ABS Edges 23-30 mm

Urban





Urban

Urban evokes **metropolitan scenarios**: the finish is forged by time, the weather and matched with contemporary construction materials, it conveys all the charm of a worn surface.

Urban is minimal without going unnoticed all with **the elegance of "less is more"**.

→ [Discover more on www.s-m-art.it](http://www.s-m-art.it)

In line with the **Minimum 1. Today.** philosophy, for each decoration we stock three thicknesses of Melamine panel, HPL and two widths of ABS edging.

U001 | **Urban Wall**

M	H1	H2
---	----	----

U002 | **Urban Concrete**

M	H1	H2
---	----	----

U005 | **Urban Iron**

M	H1	H2
---	----	----

Items in stock

M MFC 3050×2070×8-19-25 mm
ABS Edges 23-30 mm

H1 HPL 3050×2050×0,8 mm
ABS Edges 23-30 mm

H2 HPL 4200×1400×0,6 mm
ABS Edges 44 mm

Vintage



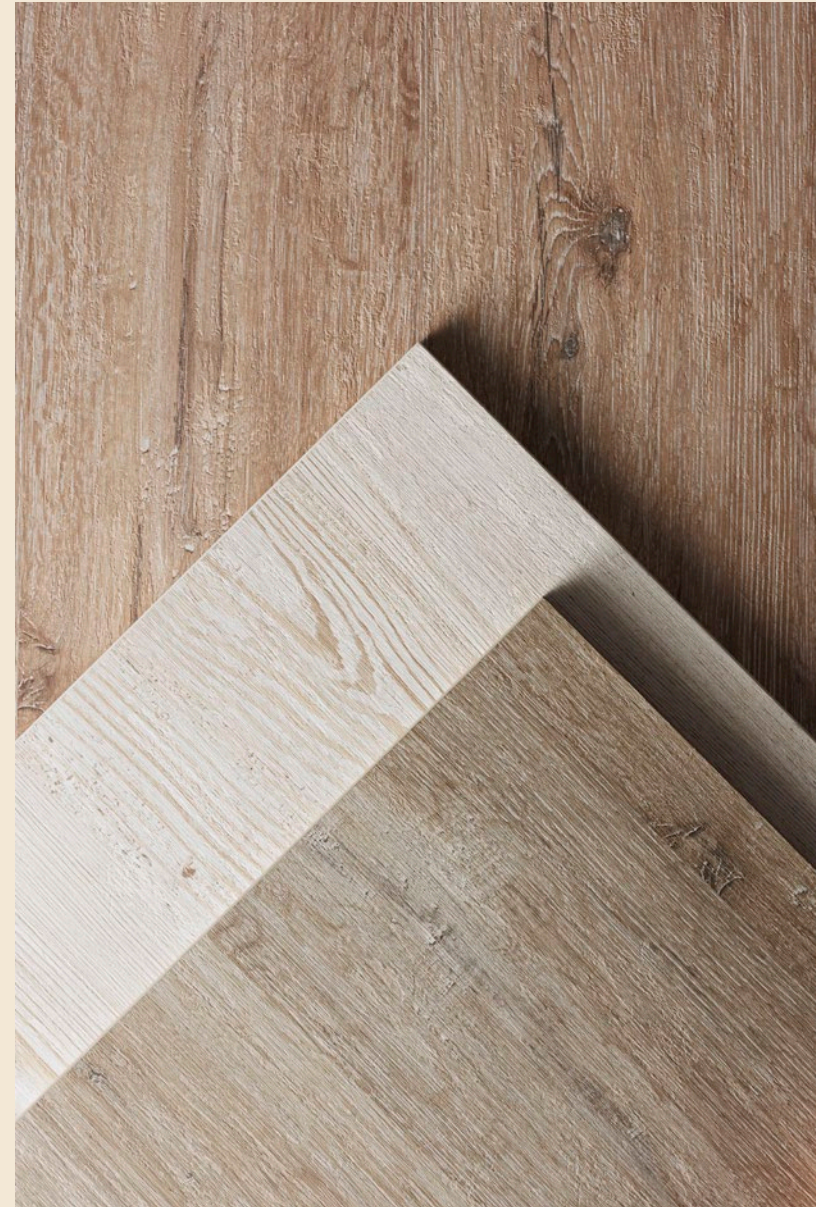
Vintage

Vintage has a romantic feel and a **shabby chic** look with a **contemporary appeal**.

Its **scratched and stripped finish** goes beautifully with rustic woodgrains, enhancing their warmth with its characteristic matt/super-matt contract and the texture of its surface.

→ [Discover more on www.s-m-art.it](http://www.s-m-art.it)

In line with the **Minimum 1. Today.** philosophy, for each decoration we stock three thicknesses of Melamine panel, HPL and two widths of ABS edging.





P001

Vintage Wengen**M** | **H**

R001

Vintage Aspen**M** | **H**

R002

Vintage Cortina**M** | **H**

R003

Vintage Chamonix**M** | **H****Items in stock**

M MFC 3050×2070×8-19-25 mm
ABS Edges 23-30 mm

H HPL 3050×2050×0,8 mm
ABS Edges 23-30 mm

Wow!





Wow!

Wow! takes your breath away: the unevenly flamed design with its large cathedrals is elegant but not subdued, featuring an awareness of its beauty, it is enhanced by a synchronised finish that makes it **identical to chiselled wood**.

The surface is made unique by the **three different degrees of reflectivity**.

→ [Discover more on www.s-m-art.it](http://www.s-m-art.it)

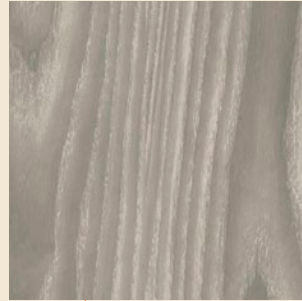
In line with the **Minimum 1. Today** philosophy, for each decoration, SM'art stocks three thicknesses of Melamine panel, register embossed HPL and two widths of ABS edging.

W001 | **Wow! Artico**

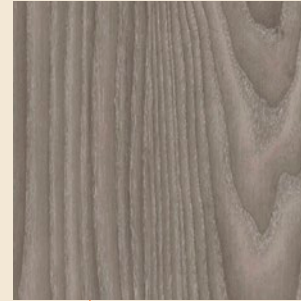
M	H
---	---

W002 | **Wow! Savana**

M	H
---	---

W003 | **Wow! Patagonia**

M	H
---	---

W004 | **Wow! Taiga**

M	H
---	---

W005 | **Wow! Tundra**

M	H
---	---

W006 | **Wow! Pampas**

M	H
---	---

Items in stock

M MFC 3050×2070×8-19-25 mm
ABS Edges 23-30 mm

H HPL 3050×2050×0,8 mm
ABS Edges 23-30 mm

Matrix



Matrix

Matrix is a range of panels with a transparent translucent **methacrylate core** surfaces with our HPL laminates and subsequently etched.

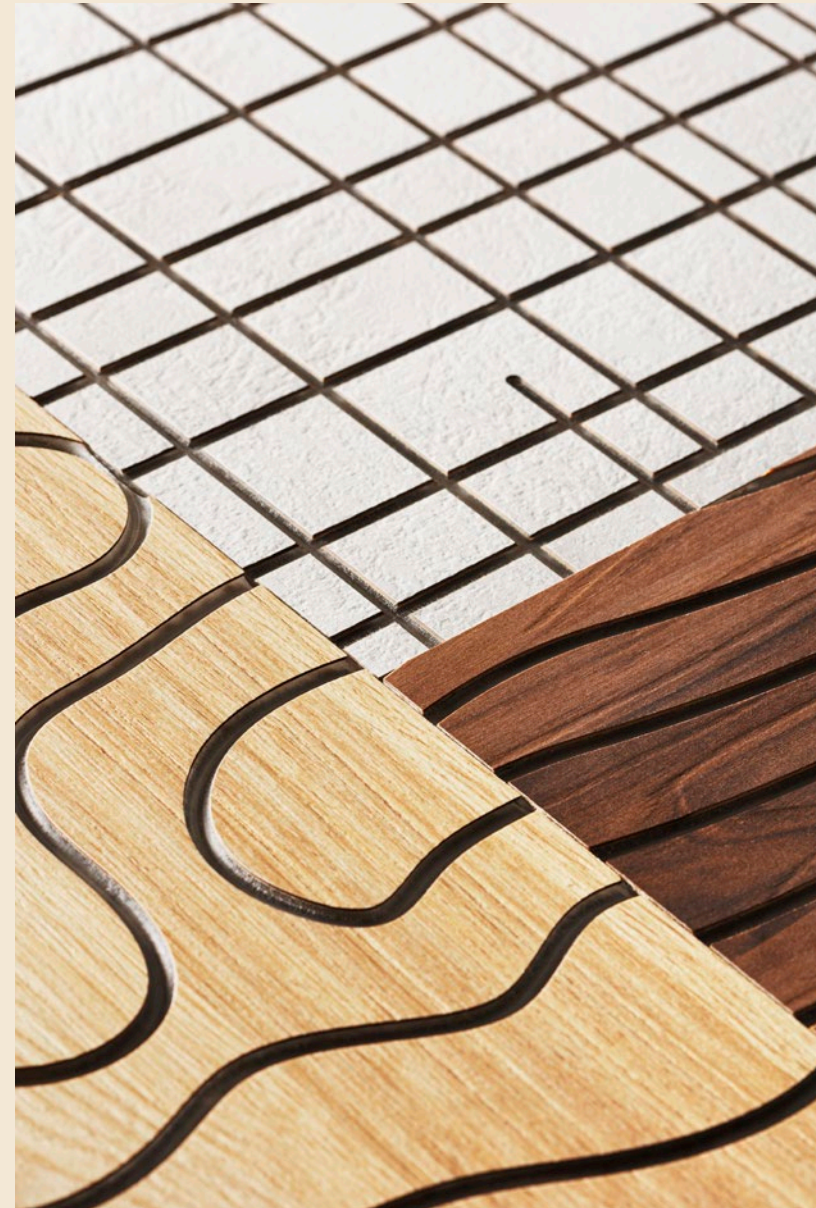
The range of possible combinations is very extensive with a **minimum order of just two panels**. The materials are all available in our warehouse making **delivery times very quick**.

You can match many HPL laminates with various engraving designs, giving origin to a **versatile and personal product**. A big plus is the coordinated range of melamine faced board, high pressure laminates and ABS edges.

→ [Discover more on www.s-m-art.it](http://www.s-m-art.it)

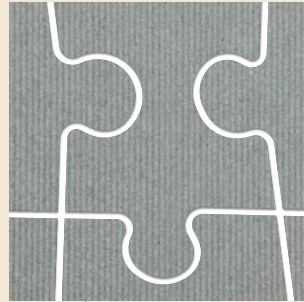
The panels are translucent where they have been milled, making them best appreciated when **lit from behind**.

The panel size is 3050×1020×5 mm





C003 | **Dedalo Polo**



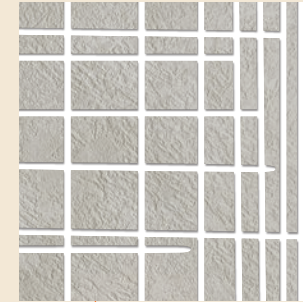
D006 | **Puzzle**
Beton Marsiglia



M021 | **Wave Chrysler**



ME04 | **Tortuga Brunito**



N001 | **Block Platino**

Onda





Onda

Onda is a **sculpted panel** made of HDF which starts out with a thickness of 18 mm, while the final thickness depends on the depth of the sculpting and varies from area to area.

Onda is **ready to be lacquered**.

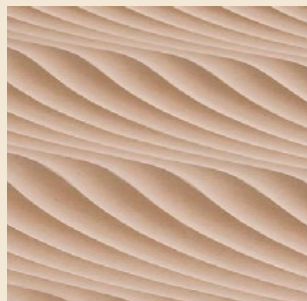
→ [Discover more on www.s-m-art.it](http://www.s-m-art.it)

Onda panels are all in size 3050×1220 mm to clad any wall and they all have **designs studied to guarantee the continuity** of the elements when two panels are matched on either the long or the short side.

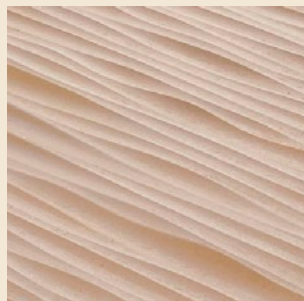
Sculptings which run vertically can also be supplied in the horizontal (H) version.



Dedale



Mar Nero



Mar Rosso



Mar Caspio



Mosaico



Pop



Puzzle



Tortuga

Each product category is enriched by an illustrated symbol that serves as a **narrative container** to explain the scenarios and imagery suggested by each collection.

Woodland

Wooden finishes inspired by **wild nature**.



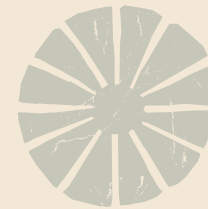
Hollywood

Wooden finishes with **classic elegance**.



Origin

Stone finishes with a **primordial character**.



Vision

Dynamic and lively variegated finishes.



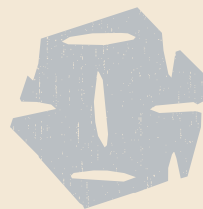
Metropolis

Finishes inspired by **urban modernity**.



Metal

Metallic finishes with a **contemporary character**.



Matrix

Finishes with backlit **graphic engravings**.



Compact

Finishes available in **Compact HPL**.



SM 'art'
Surface Materials

www.s-m-art.it
info@s-m-art.it

